

# NOTICE TO MARINERS

## 22.03.2017

### DUDGEON OFFSHORE WIND FARM CONSTRUCTION WORKS

**NOTICE IS HEREBY GIVEN that construction activities are in progress at the Dudgeon Offshore Wind Farm.**

Wind turbine generators will be installed until Q3 2017. All construction work is planned to be completed late 2017.

#### **Service Operation Vessel**

The ESVAGT NJORD will be performing preparation support for the operation of the wind farm and will be in regular transit between the Dudgeon site and Great Yarmouth.

#### **Wind Turbine Generator Installation**

The SEA CHALLENGER will perform installation of the wind turbine generators (WTG) from January 2017 until Q3-2017. WTG installation and commissioning work will be performed at the following locations in March – April:

<b>Location</b>	<b>Easting</b>	<b>Northing</b>	<b>Lon DD</b>	<b>Lat DD</b>	<b>Depth LAT [m]</b>
Sub-Station	391 870	5 902 955	1,378776	53,264808	-21,1
L01	391 174	5 901 522	1,368835	53,251789	-21,0
L02	391 122	5 900 148	1,368526	53,239433	-19,9
L03	391 760	5 899 631	1,378257	53,234918	-20,2
L04	392 399	5 899 114	1,388002	53,230402	-21,0
L05	393 038	5 898 596	1,397745	53,225877	-20,6
K01	392 045	5 902 246	1,381639	53,258473	-21,5
K02	391 907	5 900 928	1,380019	53,246602	-21,2
K03	392 640	5 900 334	1,391200	53,241413	-20,8
K04	393 373	5 899 739	1,402378	53,236214	-21,0
K05	393 676	5 898 079	1,407470	53,221359	-21,8
T01	392 212	5 903 533	1,383706	53,270071	-21,5
T02	392 948	5 902 936	1,394938	53,264856	-22,1
T03	394 241	5 900 466	1,415137	53,242920	-21,8
T04	394 974	5 899 873	1,426312	53,237737	-22,3
T05	394 840	5 898 551	1,424742	53,225832	-21,2
J01	392 777	5 901 653	1,392808	53,253293	-23,1

Location	Easting	Northing	Lon DD	Lat DD	Depth LAT [m]
J02	393 509	5 901 060	1,403974	53,248112	-22,5
J03	394 107	5 899 145	1,413569	53,231024	-21,7
J04	394 315	5 897 562	1,417208	53,216841	-22,3
J05	394 954	5 897 045	1,426945	53,212322	-21,2
F01	392 353	5 904 837	1,385377	53,281817	-21,7
F02	393 254	5 905 526	1,398654	53,288190	-23,2
F03	392 649	5 906 016	1,389417	53,292470	-22,8
F04	392 044	5 906 506	1,380177	53,296750	-22,4
F05	391 439	5 906 996	1,370936	53,301030	-22,0
F06	390 834	5 907 486	1,361693	53,305308	-22,3
E01	391 477	5 904 129	1,372486	53,275276	-22,2
E02	391 619	5 905 431	1,374170	53,287004	-22,4
E03	390 886	5 906 025	1,362975	53,292191	-20,7
E04	390 153	5 906 619	1,351778	53,297377	-20,6
E05	390 229	5 907 976	1,352448	53,309586	-21,5
E06	389 624	5 908 466	1,343201	53,313863	-21,1

**COORDINATE REFERENCE SYSTEM:**

Datum: WGS84

Projection: UTM Zone 31N

**Accommodation Vessel**

The VESTLAND CYGNUS will be on location until Q4-2017 as accommodation vessel for Turbine commissioning.

**Commissioning activities**

For the commissioning and construction work there are several Crew Transfers Vessels operating in the wind farm area on a daily basis. This activity is ongoing and will continue until commissioning completes in Q4 2017.

**Rock Installation**

A rock installation campaign for scour protection of foundations will be ongoing in the period early May until mid-June. Vessel spread; Rock installation vessel Van Oord – HAM 602, a survey vessel, and 4 bulk carriers for rock supply.

The three intended anchor locations for the rock transfer from the bulk carriers are identified in the plot later in this notice.

## Guard Vessel

The RESOLUTE or the ADVENTURE will be present at the site to safe guard the wind farm area.

## **GENERAL**

**MARINERS ARE HEREBY INFORMED** that a statutory construction Safety Zone (exclusion zone) is in place at the wind farm site. This safety zone is defined by:

- A 500 metres radius around each wind turbine, offshore sub-station and their foundations whilst work is being performed as indicated by the presence of construction vessels; and
- A 50 metres radius around each wind turbine, the offshore sub-station platform and associated foundation structures installed, complete or incomplete but waiting to be commissioned as part of the Dudgeon offshore wind farm where personnel are present on, or are being landed on or being taken from the structures.

**All vessels will exhibit appropriate lights and shapes prescribed by the International Regulations for Preventing Collisions at Sea.**

**ALL VESSELS ARE REQUESTED** to give all construction and support vessels a wide berth.

**MARINERS ARE ADVISED** to navigate with caution and keep continued watch on VHF Ch. 16 when navigating the area.

A further notice to mariners will be issued when these works are completed, expected autumn 2017.

Please direct any enquiries regarding this notice to Statoil Wind Control Centre: [statoilwindcontrol@statoil.com](mailto:statoilwindcontrol@statoil.com)

A copy of this notice can also be found at:

<http://dudgeonoffshorewind.co.uk/news/notice-to-mariners>

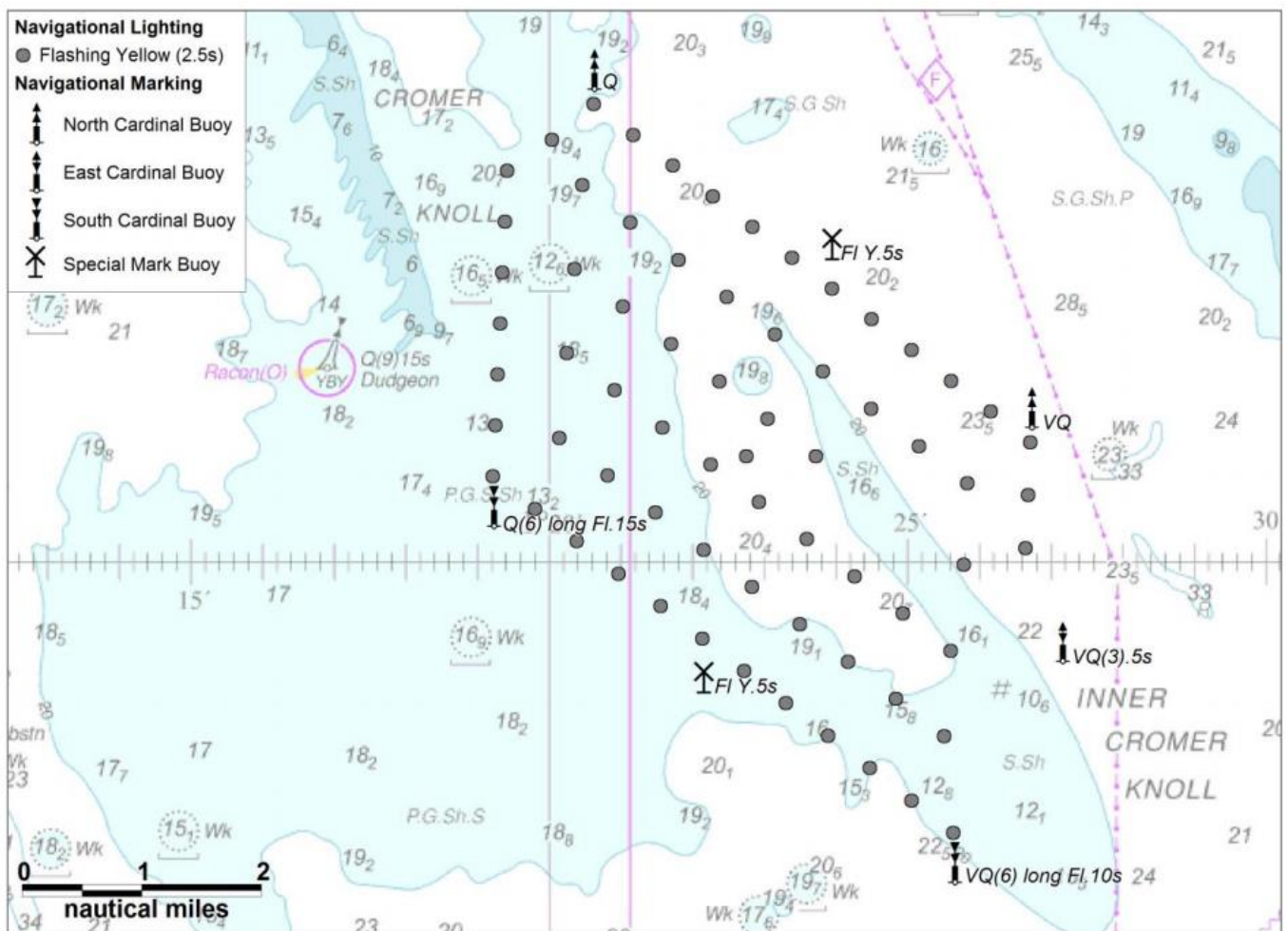
## Fishing

**The Dudgeon Wind Farm area is closed to fishing.** The coordinates for the area of the closed area are included below.

## SITE DETAILS

### Position of Navigation Buoys demarcating the Dudgeon Offshore Wind Farm site

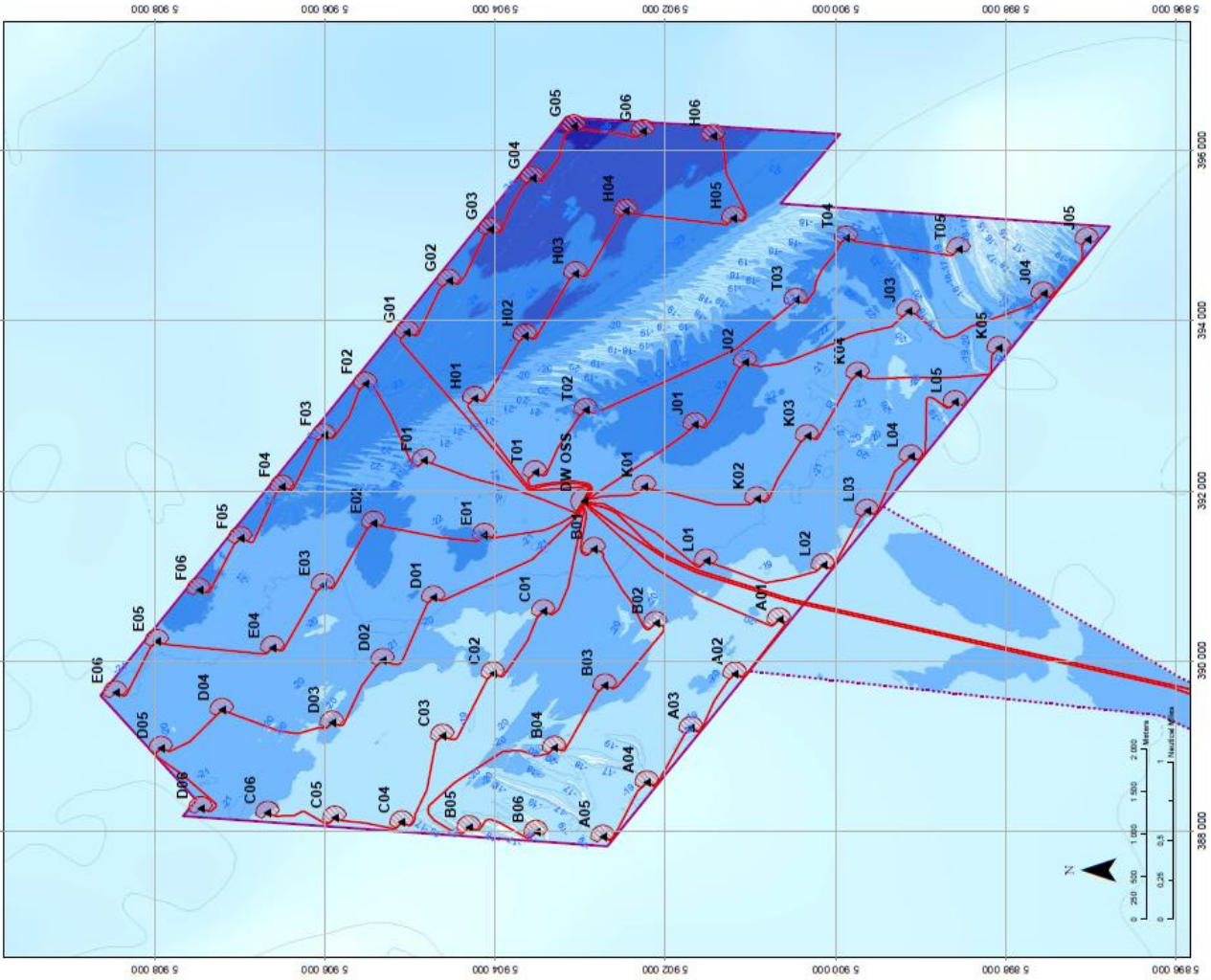
Mark	Location	Name	Latitude	Longitude	Status	Flash Character	Code	Range
North Cardinal	NW Cardinal	<b>N-DOW</b>	53° 19,102' N	1° 20,592' E	Temporary	Q	601	5nm
Special Mark	Special Mark North	<b>DOW - SM - N</b>	53° 17,631' N	1° 23,919' E	Temporary	Fl.Y.5s	328	5nm
North Cardinal	North East Cardinal	<b>NE - DOW</b>	53° 16,277' N	1° 26,691' E	Temporary	VQ	501	5nm
East Cardinal	East Cardinal	<b>E- DOW</b>	53° 14,320' N	1° 27,123' E	Temporary	VQ(3).5s	508	5nm
South Cardinal	SE Cardinal	<b>S - DUDGEON</b>	53° 12,470' N	1° 25,617' E	<b>Permanent</b>	VQ(6) long Fl.10s	516	5nm
Special Mark	Special Mark South	<b>DOW - SM - S</b>	53° 14,012' N	1° 22,132' E	Temporary	Fl.Y.5s	328	5nm
South Cardinal	SW Cardinal	<b>SW - DOW</b>	53° 15,451' N	1° 19,188' E	Temporary	Q(6) long Fl.15s	631	5nm





# WTG ID and locations (coordinates)

WTG and Substation Locations										
WTG ID	Easting	Northing	Lon DD	Lat DD	Depth LAT	WTG	Easting	Northing	Lon DD	Depth LAT
A01	390483.0	500066.0	1.38777	53.243947	-18.5	F06	390834.0	500749.0	1.391693	-22.3
A02	398846.0	501153.0	1.34942	53.248989	-18.6	G01	394465.0	500560.0	1.407990	-23.6
A03	388206.0	500218.0	1.33859	53.252862	-18.2	G02	394465.0	500560.0	1.411739	-23.6
A04	388588.0	500218.0	1.33859	53.252862	-18.2	G03	395070.0	500405.0	1.426371	-24.3
A05	387628.0	500278.0	1.318782	53.262013	-18.6	G04	388675.0	500355.0	1.426371	-24.3
A06	391131.0	500470.0	1.327566	53.256985	-21.5	G05	388675.0	500355.0	1.426371	-24.3
B01	390709.0	500711.0	1.346480	53.269170	-19.6	H01	390280.0	500257.0	1.442772	-20.4
B02	390709.0	500711.0	1.346480	53.269170	-19.6	H02	390280.0	500257.0	1.442772	-20.4
B03	388954.0	500431.0	1.320918	53.278107	-19.3	H03	393820.0	500348.0	1.396567	-23.0
B04	388954.0	500431.0	1.320918	53.278107	-19.3	H04	394653.0	500095.0	1.419863	-23.9
B05	388954.0	500431.0	1.320918	53.278107	-19.3	H05	395207.0	500461.0	1.430149	-24.4
B06	388954.0	500431.0	1.320918	53.278107	-19.3	H06	395207.0	500461.0	1.430149	-24.4
C01	390580.0	500343.0	1.350278	53.289105	-18.2	H07	395207.0	500461.0	1.430149	-24.4
C02	388948.0	500427.0	1.348102	53.274024	-18.8	H08	395207.0	500461.0	1.430149	-24.4
C03	388917.0	500462.0	1.336837	53.279208	-18.4	T01	392212.0	500333.0	1.383706	-21.5
C04	388907.0	500509.0	1.321478	53.283269	-18.4	T02	392212.0	500333.0	1.383706	-21.5
C05	388163.0	500687.0	1.322040	53.293382	-20.0	T03	394241.0	500460.0	1.416137	-21.8
C06	388202.0	500676.0	1.322902	53.297474	-20.0	T04	394674.0	500877.0	1.428312	-22.3
D01	390741.0	500472.0	1.341247	53.290489	-21.7	T05	394674.0	500877.0	1.428312	-22.3
D02	390006.0	500523.0	1.350022	53.285702	-20.9	J01	392777.0	500165.0	1.362908	-23.1
D03	389271.0	500520.0	1.338783	53.290913	-20.9	J02	392777.0	500165.0	1.362908	-23.1
D04	389420.0	500713.0	1.340577	53.302662	-20.2	J03	394107.0	500100.0	1.403974	-22.5
D05	388871.0	500793.0	1.333591	53.308910	-20.3	J04	394107.0	500100.0	1.403974	-22.5
D06	388265.0	500746.0	1.323185	53.304596	-20.3	J05	394315.0	500755.0	1.417208	-22.3
E01	391477.0	500412.0	1.374170	53.275276	-22.2	K01	394654.0	500704.0	1.420945	-21.2
E02	391610.0	500431.0	1.374170	53.275276	-22.2	K02	392245.0	500246.0	1.361639	-21.5
E03	390880.0	500025.0	1.362975	53.282191	-20.7	K03	392245.0	500246.0	1.361639	-21.5
E04	390153.0	500181.0	1.351778	53.287377	-20.6	K04	392245.0	500246.0	1.361639	-21.5
E05	390220.0	500791.0	1.324448	53.306686	-21.5	K05	393730.0	500735.0	1.402378	-21.8
E06	388254.0	500646.0	1.343201	53.313983	-21.1	L01	391174.0	500152.0	1.368836	-21.0
F01	392253.0	500657.0	1.368377	53.281917	-21.7	L02	391174.0	500152.0	1.368836	-21.0
F02	393252.0	500520.0	1.369017	53.288160	-23.2	L03	391700.0	500146.0	1.368836	-21.0
F03	393252.0	500520.0	1.369017	53.288160	-23.2	L04	391700.0	500146.0	1.368836	-21.0
F04	393252.0	500520.0	1.369017	53.288160	-23.2	L05	391700.0	500146.0	1.368836	-21.0
F05	393252.0	500520.0	1.369017	53.288160	-23.2	L06	393203.0	500629.0	1.397245	-20.0
F06	391430.0	500686.0	1.370938	53.301030	-22.0	Sub St.	391870.0	500265.0	1.378776	-21.0



**Legend Main Map**

- Evolution Zone
- Sub Station
- Planned Interarray Cable Route
- Planned Export Cable Route
- Consented Field Outline
- Bathymetry (m rel. to LAT)
  - 24 to -26
  - 22 to -24
  - 20 to -22
  - 18 to -20
  - 16 to -18
  - 14 to -16
  - 12 to -14

**Dudgeon Offshore Windpark**

PRODUCTION DATA

DATE	19/06/2014
SCALE	AS SHOWN

DESIGN DATA

ISSUED FOR INFORMATION	RD05	REVISION	REVISED
ISSUED FOR INFORMATION	RD06	REVISION	REVISED
ISSUED FOR INFORMATION	RD07	REVISION	REVISED
ISSUED FOR INFORMATION	RD08	REVISION	REVISED
ISSUED FOR INFORMATION	RD09	REVISION	REVISED
ISSUED FOR INFORMATION	RD10	REVISION	REVISED
ISSUED FOR INFORMATION	RD11	REVISION	REVISED
ISSUED FOR INFORMATION	RD12	REVISION	REVISED

PROJECT LOCATION

UK / North Norfolk

PROJECT NUMBER

C177-DOW-N-XE-0001-01

SCALE

1:50000

DATE

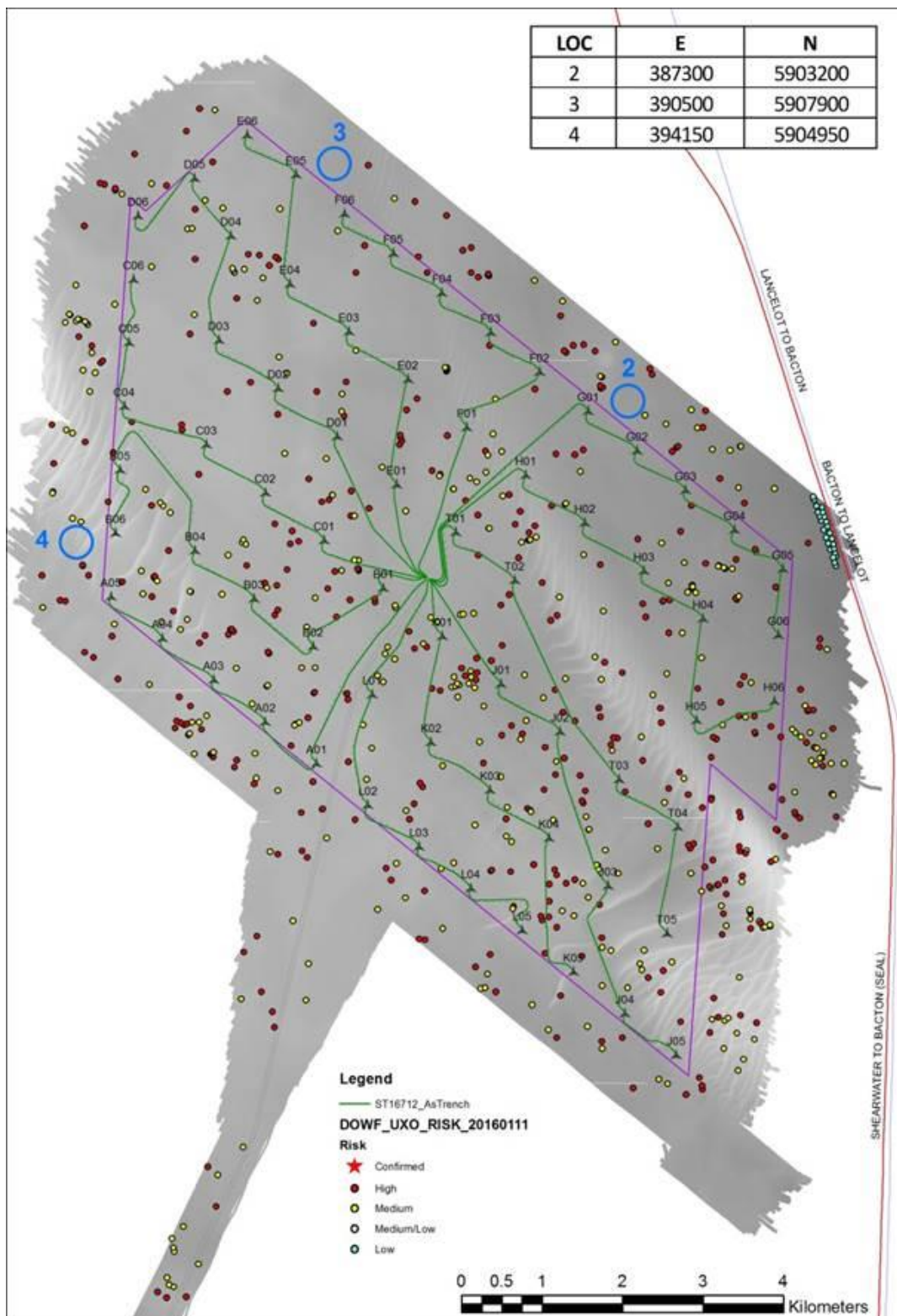
19/06/2014

DRAWN BY

REVISIONS

NO. DATE DESCRIPTION

## Rock Installation Campaign. Anchor locations for rock transfer





## KEY CONSTRUCTION VESSEL CONTACT DETAILS

### ESVAGT NJORD



**Call sign:** OWZN2

**Bridge Phone:** VSAT.TEL: +45 32 71 26 89; / GSM: +45 32 71 26 85

**E-mail:** njord@esvagtvesel.com

### SEA CHALLENGER



**Call sign:** OWLQ2

**Bridge Phone:** V-sat: +45 89 88 90 10

**Master phone:** vsat +45 89 88 90 11 / GSM +45 52 13 95 80

**E-mail:** seachallenger@a2sea.com / Master mast\_sc@a2sea.com

## VESTLAND CYGNUS



**Callsign:** C6BW7

**Bridge Phone:** VSAT.TEL: +4723677230; +4723677230 / GSM: +47 41 43 02 07

**E-mail :** [captain.cygnus@vestlandoffshore.no](mailto:captain.cygnus@vestlandoffshore.no) ; [bridge.cygnus@vestlandoffshore.no](mailto:bridge.cygnus@vestlandoffshore.no)

## Van Oord – HAM 602



**Callsign:** PENF

**Bridge Phone:** Hold

**E-mail:** Hold



## ADVENTURE



**Callsign:** 2IFE4

**Bridge Phone:** V-sat 01947750717

**E-mail:** [adventureGS@gmail.com](mailto:adventureGS@gmail.com) / [adventure.guard1@gmail.com](mailto:adventure.guard1@gmail.com)

## Resolute



**Callsign:** MLPD5

**Bridge Phone:** +44 284 179 8209

**E-mail:** [resolute.guard1@gmail.com](mailto:resolute.guard1@gmail.com)

**Advance WY77**



**Callsign:** MZNA6

**Bridge Phone:** Sat. Phone: 00870773231090/01947 240024

**E-mail:** [adventureGS@gmail.com](mailto:adventureGS@gmail.com)